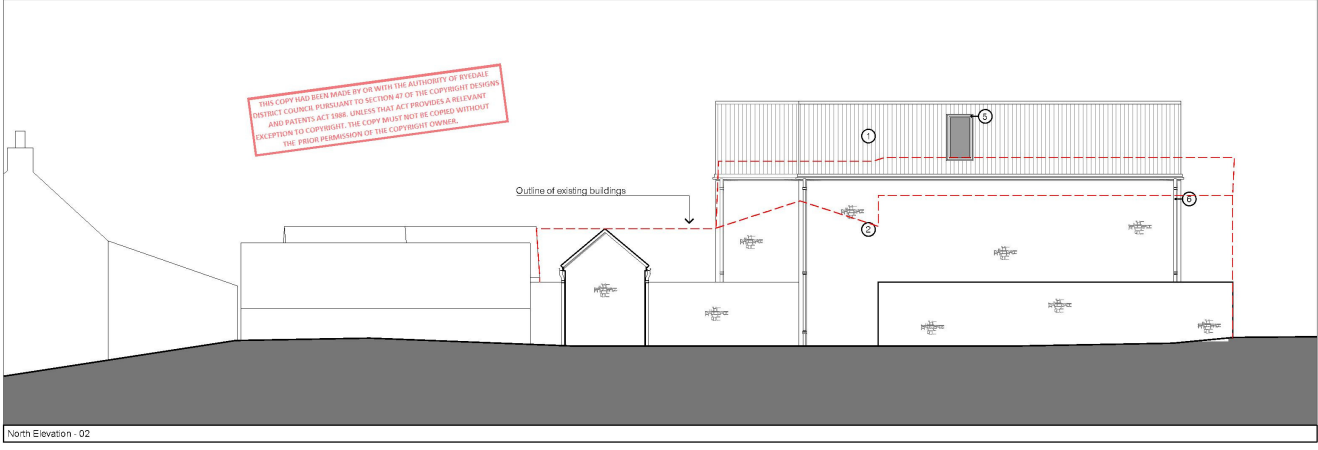
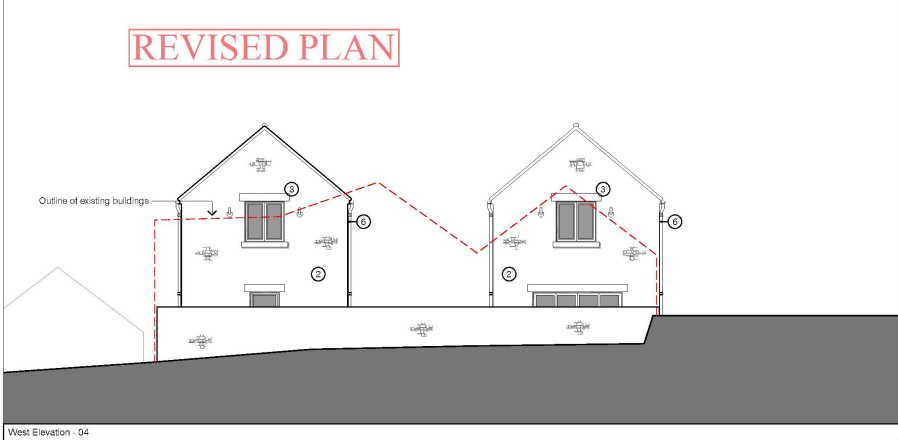


THIS COPY HAS BEEN MADE BY OR WITH THE AUTHORITY OF RYEDALE DISTRICT COUNCIL PURSUANT TO SECTION 47 OF THE COPYRIGHT DESIGNS AND PATENTS ACT 1988. UNLESS THAT ACT PROVIDES A RELEVANT EXCEPTION TO COPYRIGHT, THE COPY MUST NOT BE COPIED WITHOUT THE PRIOR PERMISSION OF THE COPYRIGHT OWNER.



North Elevation - 02

REVISED PLAN



West Elevation - 04

- Material Key:
- ① Clay pantile roof
 - ② Natural stone walls
 - ③ Stone lintels and cills
 - ④ Timber double glazed windows - colour white
 - ⑤ Timber roof lights
 - ⑥ Black uPVC gutter and downpipes
 - ⑦ Double glazed timber french doors
 - ⑧ Double glazed timber Bi folding doors

PO1	09/02/17	Update windows
PO2	17/02/17	Update following ownership confirmation
PO1	15/11/16	Update following ownership confirmation

dc-architects
 100 High Street, Ryedale, York YO21 2PL
 01904 610000
 info@dc-architects.com
 www.dc-architects.com

dc a

Proposed Redevelopment
 Harrogate, Harrogate

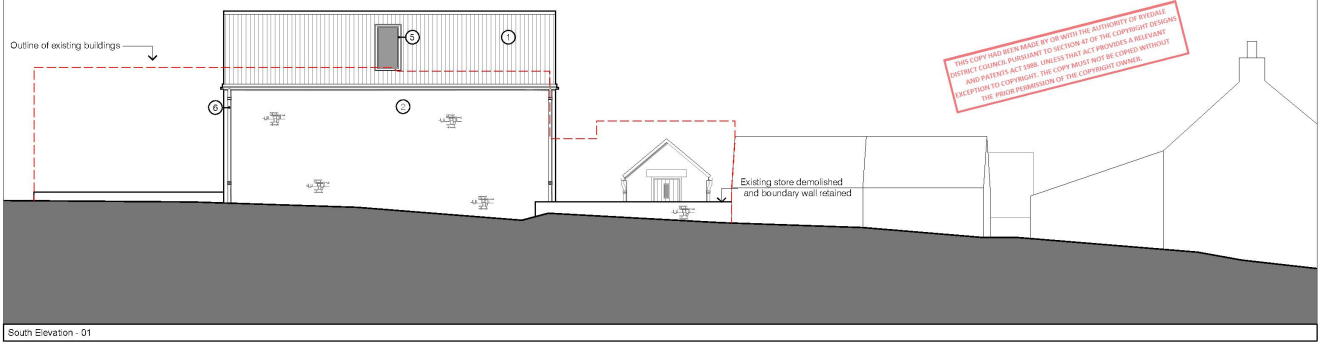
Proposed Elevations

DATE
09/02/17

1:100 @ A3

date	rev	desc	drawn	check
15/02	02/02/17	Planning	131	PO3

REVISED PLAN



South Elevation - 01



East Elevation - 03

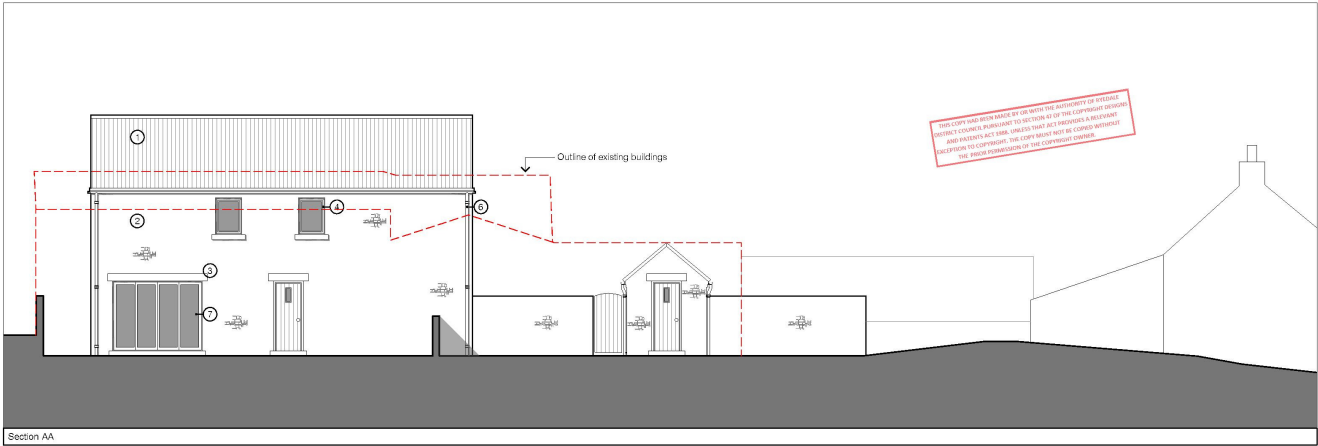
- Material Key:
- ① Clay pantile roof
 - ② Natural stone walls
 - ③ Stone lintels and cills
 - ④ Timber double glazed windows - colour white
 - ⑤ Timber roof lights
 - ⑥ Black uPVC gutter and downpipes
 - ⑦ Double glazed timber french doors
 - ⑧ Double glazed timber Bi folding doors

P02 02/02/17 Update window
 P02 15/11/17 Update following ownership confirmation
 P01 15/11/17 Update following ownership confirmation
 1599 02/02/17 Planning

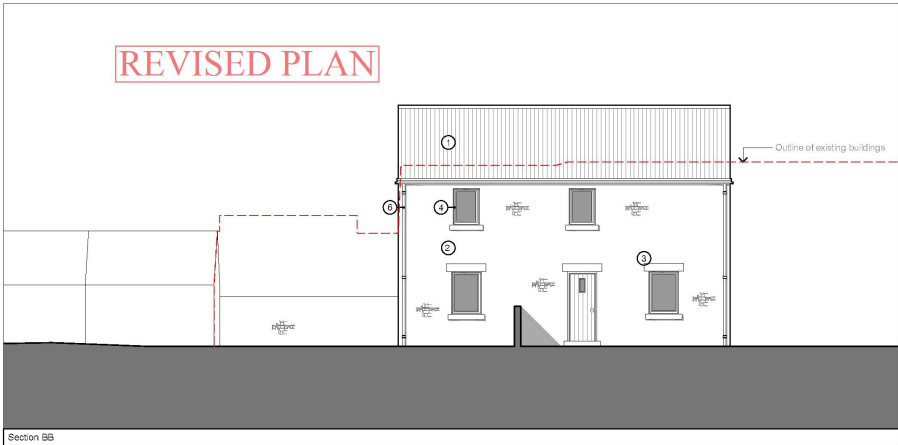
dc-architects
 1599 Old Street, Birmingham, B1 1AA
 0121 222 2222
 www.dc-architects.co.uk

dc
 Proposed Redevelopment
 Birmingham, Alabama
 Proposed Elevations
 DATE 09/02/17

1:100 @ A3
 1599 02/02/17 Planning 130 P03



Section AA



Section BB

- Material Key:
- ① Clay pantile roof
 - ② Natural stone walls
 - ③ Stone lintels and cills
 - ④ Timber double glazed windows - colour white
 - ⑤ Timber roof lights
 - ⑥ Black uPVC gutter and downpipes
 - ⑦ Double glazed timber french doors
 - ⑧ Double glazed timber Bi folding doors

P02 1/2/17 Update following ownership confirmation
 P01 15/1/17 Update following ownership confirmation

dc-architects
 Suite 4, 100-102, Riverside Park
 100-102, Riverside Park, Birmingham, B2 4DP
 T: 0121 709 1100
 E: info@dc-architects.com



Proposed Redevelopment
 Birmingham, Alabama

Proposed Section

DATE
 09/02/17

1:100 @ A3
 1590 02/02/17 Planning 132 P01